

## Ludwig Mies = LUDWIG MIES VAN DER ROHE (1886-1969)

Born Aachen (= Aix-la-Chapelle), stonemason father

Riehl House, Potsdam, Germany, 1907

Works for P. Behrens, 1908-1910; cf Schinkel Classicism:

Altes Museum, Schinkel, Berlin, 1828;

Bismark Monument, Bingen, Rhein, Germany, 1910

Urbig House, Potsdam, Germany, 1915

Friedrichsstrasse Skyscraper Competition Entry, 1921

Glass Skyscraper, 1922

"Corrections" by M. Stam, ABC magazine, 1925

\* Concrete Office Building Project, G Magazine, June 1922

Concrete Country House Project, 1922 (publ. G Magazine, Sept. 1923)

\* Brick Country House Project, 1923

Mosler House, Potsdam, Germany, 1924

Monument to Rosa Luxemburg & Karl Liebknecht, Berlin, 1926

Afrikanische Strasse housing Project, 1926-7

\* Weissenhof Housing Development Exhibition, Stuttgart, Germany, 1927

Exhibit Plan & Apartment Block, Mies van der Rohe

Lange & Esters Houses, Krefeld, Germany, 1927-30

\* Barcelona (or German) Pavilion, Barcelona World's Fair, Spain, 1929

AEG Pavilion, Barcelona Chair

\* Villa Tugendhat, Brno, Czechoslovakia, 1930

Neue Wache Memorial Competition (orig. By Schinkel), Berlin, 1930

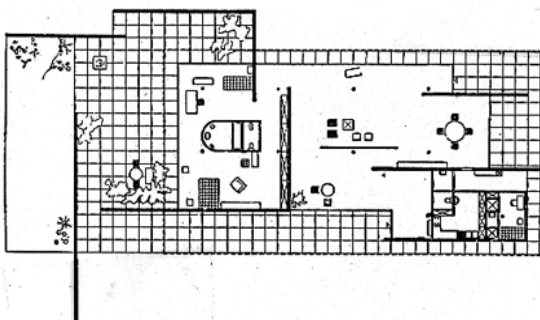
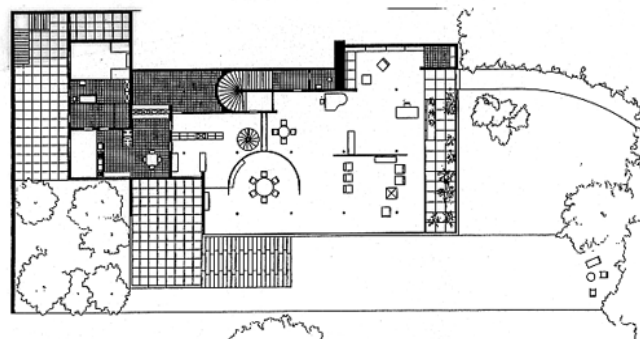
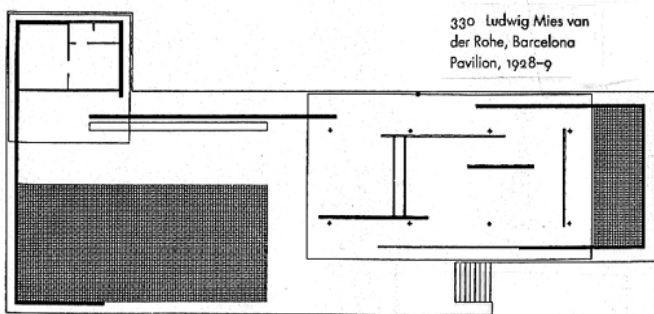
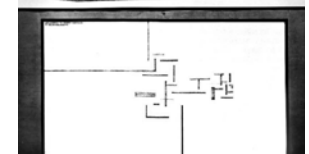
Courtyard House, Berlin Building Exposition, with Lily Reich, Berlin, 1931

Reichsbank Extension Competition Entry, Berlin, 1933

Resor House Project, Wyoming, 1937-40

Farnsworth House, Plano, IL, 1945-50

I.I.T., 1950ff.



TUGENDHAT  
BRNO, CZECH, 1929-30



327. MIES VAN DER ROHE. Country house for a bachelor, Berlin Building Exhibition, 1931. In the center of the great exhibition hall, Mies van der Rohe erected one of his glass-walled single-story houses. One of the last modern manifestations before the collapse of German culture.